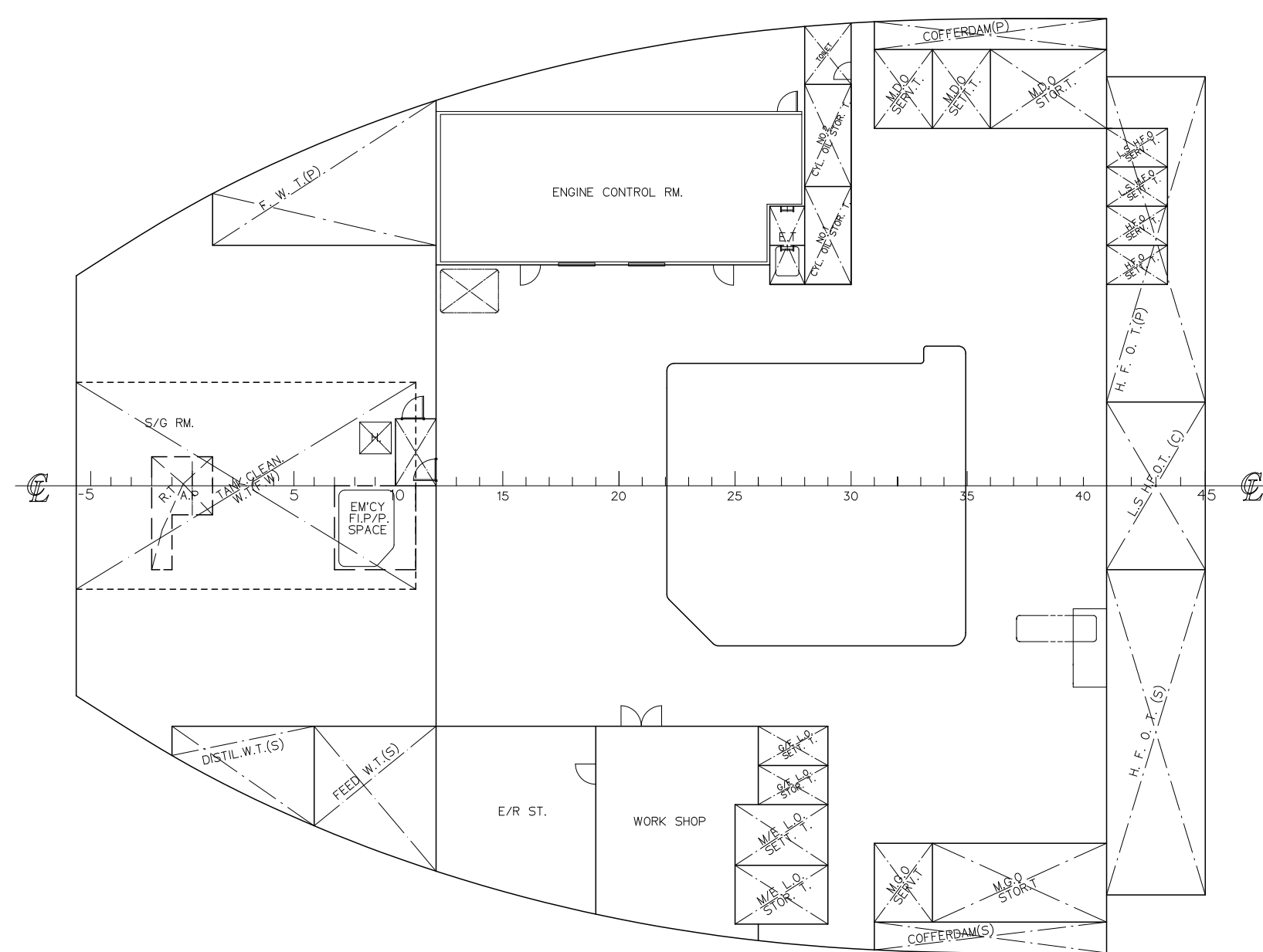
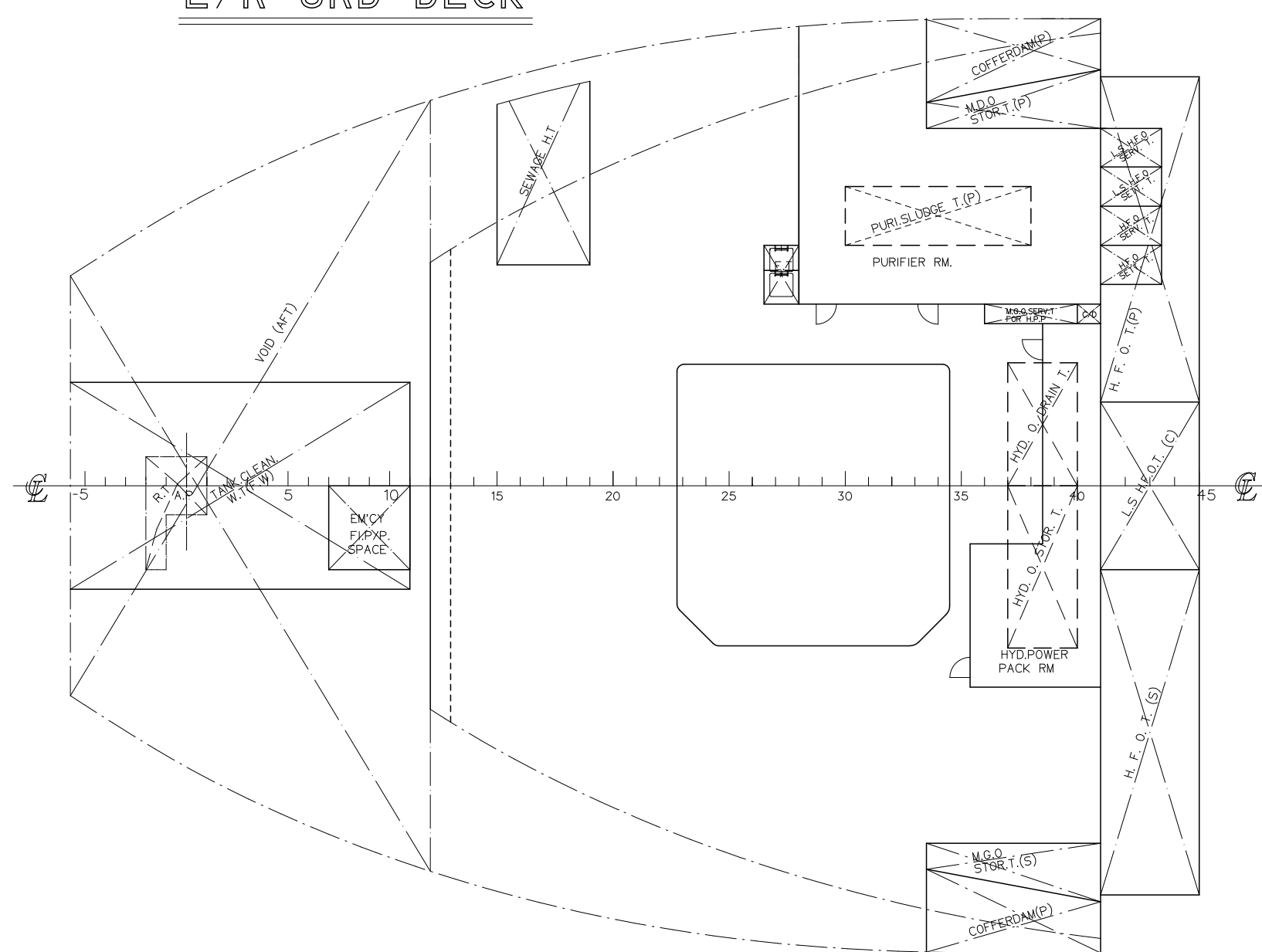


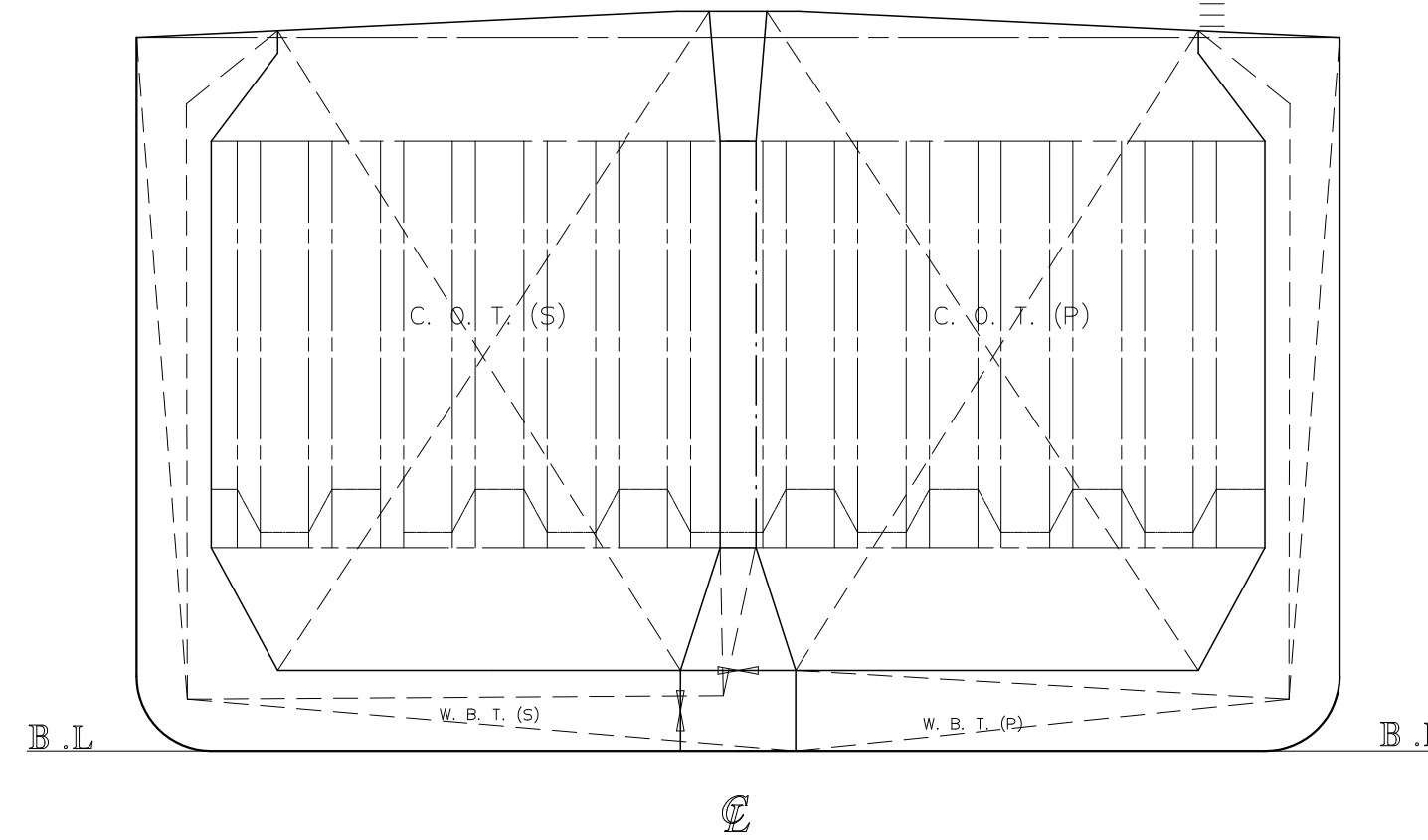
E/R 2ND DECK



E/R 3RD DECK

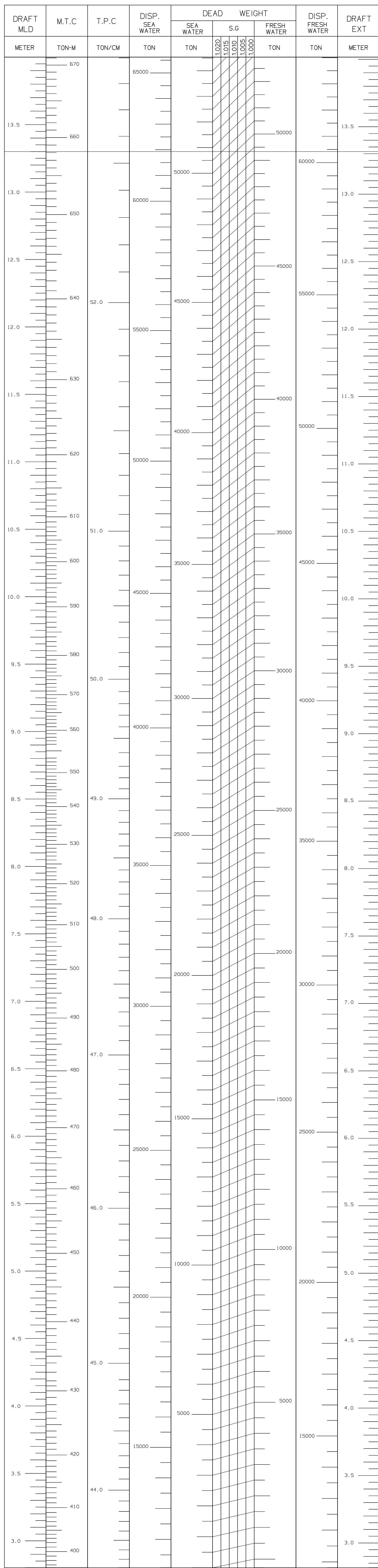


TYPICAL SECTION

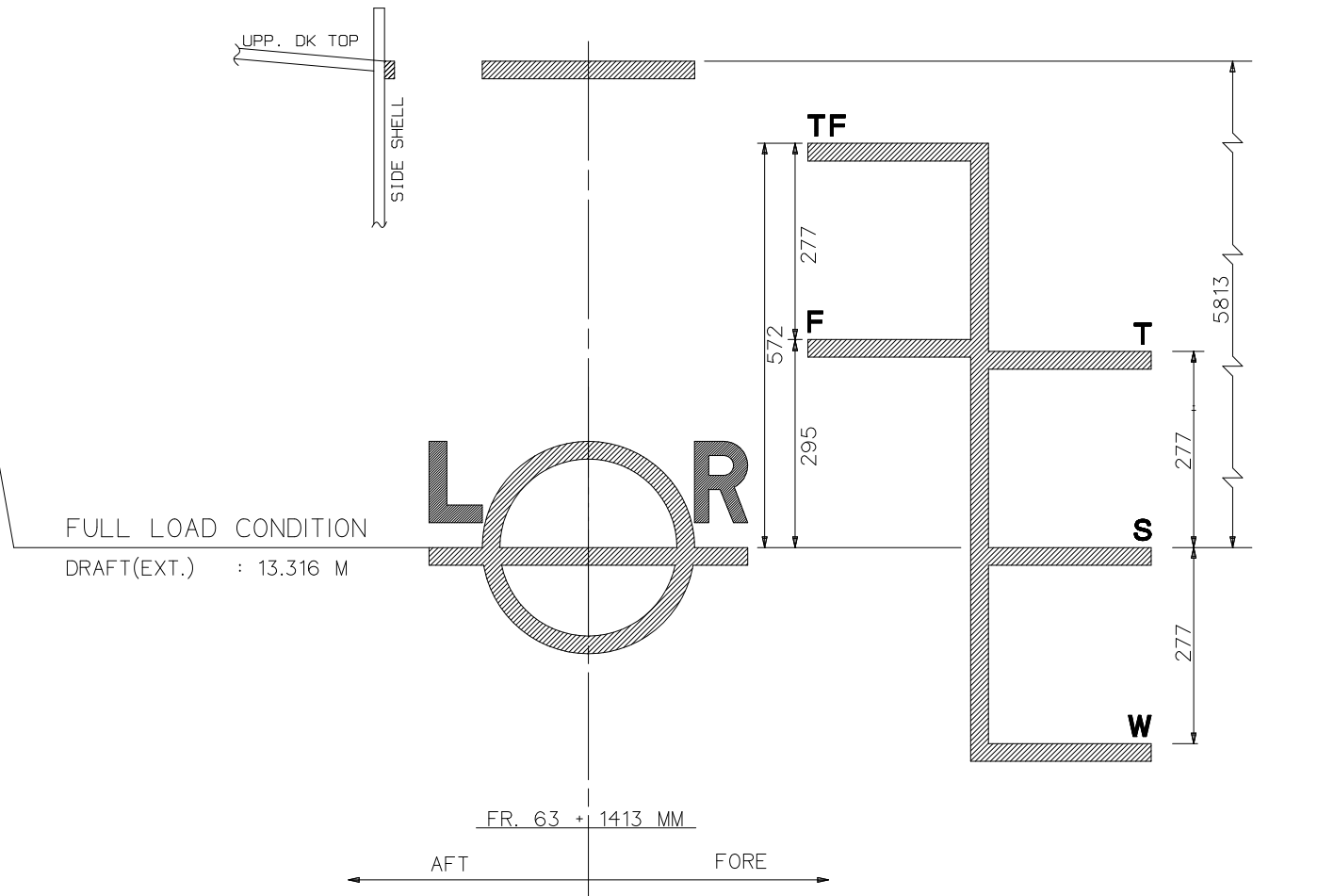


PROFILE

DEAD WEIGHT SCALE



REV. SYMBOL	REVISED BY	REVISED BY
O	OWNER'S COMMENT	DI
C	CLASS COMMENT	DM
A	AUTHORITY COMMENT	DA
M	MAKER'S RECOMMENDATION	DO
Y	YARD IMPROVEMENT	
DATE	REV. NO.	REMARK
MAR. 08, 2014	0	As Final Plan for SB570



WATER ZONE	TROPICAL FRESH	TROPICAL	SUMMER	WINTER
TOTAL DEPTH (M)	5.241	5.518	5.813	6.090
FREEDBOARD (M)	13.888	13.611	13.593	13.039
DRAFT EXT. (M)	63359.1	61933.2	63386.7	60475.8
DISPLACEMENT (T)	63359.1	61933.2	63386.7	60475.8
LIGHT WEIGHT (T)	52273.6	50847.7	50841.8	49390.3
DEAD WEIGHT (T)	52273.6	50847.7	50841.8	49390.3

CARGO OIL TANKS				
TANK NAME	ITEMS	LOCATION	VOLUME (M ³)	CENTER OF GRAVITY (M)
NO. 1 C.O.T.	82 ^{MM} 89 P	3111.06	3245.72	64.115
NO. 1 C.O.T.	82 ^{MM} 89 S	3310.23	3243.83	64.156
NO. 2 C.O.T.	75 ^{MM} 82 P	4527.72	4486.17	44.458
NO. 2 C.O.T.	75 ^{MM} 82 S	4527.72	4486.17	44.458
NO. 3 C.O.T.	68 ^{MM} 75 P	4702.98	4608.92	23.847
NO. 3 C.O.T.	68 ^{MM} 75 S	4688.10	4594.34	23.844
NO. 4 C.O.T.	61 ^{MM} 68 P	4701.29	4607.26	3.128
NO. 4 C.O.T.	61 ^{MM} 68 S	4690.29	4596.48	3.126
NO. 5 C.O.T.	54 ^{MM} 61 P	4689.29	4608.22	-17.291
NO. 5 C.O.T.	54 ^{MM} 61 S	4690.06	4597.96	-17.298
NO. 6 C.O.T.	47 ^{MM} 54 P	4552.86	4461.80	-38.156
NO. 6 C.O.T.	47 ^{MM} 54 S	4542.36	4451.51	-38.158
SUB. TOTAL		53045.36	52003.87	
SLOD T.	45 - 47 P	533.00	522.34	-50.414
SLOD T.	45 - 47 S	667.83	654.47	-50.407
SUB. TOTAL		1200.83	1176.81	
GRAND TOTAL		54256.01	53180.68	
RESIDUAL T. (P)	45 - 47 P	146.79	143.85	-11.433

WATER BALLAST TANKS				
TANK NAME	ITEMS	LOCATION	VOLUME (M ³)	CENTER OF GRAVITY (M)
NO. 1 W.B.T.	82 - 89 P	1550.10	66.129	-9.677
NO. 1 W.B.T.	82 - 89 S	1836.15	66.123	-8.189
NO. 2 W.B.T.	75 - 82 P	1505.58	45.487	-11.794
NO. 2 W.B.T.	75 - 82 S	1781.53	45.468	-9.874
NO. 3 W.B.T.	68 - 75 P	1504.81	24.877	-11.929
NO. 3 W.B.T.	68 - 75 S	1779.85	24.837	-10.085
NO. 4 W.B.T.	61 - 68 P	1503.72	4.151	-11.927
NO. 4 W.B.T.	61 - 68 S	1778.75	4.111	-10.083
NO. 5 W.B.T.	54 - 61 P	1496.35	-10.531	-11.911
NO. 5 W.B.T.	54 - 61 S	1671.38	-10.577	-10.062
NO. 6 W.B.T.	47 - 54 P	1402.04	-12.256	-11.595
NO. 6 W.B.T.	47 - 54 S	1677.08	-12.298	-9.693
NO. 7 W.B.T.	45 - 47 P	275.52	-49.951	-10.628
NO. 7 W.B.T.	45 - 47 S	331.99	-49.859	-8.820
TOTAL		21758.51		

FUEL OIL TANKS				
TANK NAME	ITEMS	LOCATION	VOLUME (M ³)	CENTER OF GRAVITY (M)
H.F.O. T.	41 - 45 P	421.43	415.00	-51.627
H.F.O. T.	41 - 45 S	528.74	518.17	-53.792
H.F.O. T. SERV. T.	41 - 45 ^{MM} P	24.73	24.24	-54.450
H.F.O. T. SETT. T.	41 - 45 ^{MM} P	24.73	24.24	-54.450
SUB. TOTAL		999.63	979.85	
L.S.H.F.O. SERV. T.	41 - 45 C	328.12	322.54	-53.764
L.S.H.F.O. SERV. T.	41 - 45 ^{MM} P	24.36	23.87	-54.450
L.S.H.F.O. SETT. T.	41 - 45 ^{MM} P	24.73	24.24	-54.450
SUB. TOTAL		378.21	370.85	
GRAND TOTAL		1377.84	1350.70	

MARINE DIESEL OIL TANKS				
TANK NAME	ITEMS	LOCATION	VOLUME (M ³)	CENTER OF GRAVITY (M)
M.D.O. STOR. T.	25 ^{MM} 35 P	109.79	107.89	-58.046
M.D.O. SERV. T.	25 ^{MM} 35 P	21.32	20.89	-60.500
M.D.O. SETT. T.	27 - 25 ^{MM} P	21.32	20.89	-60.500
TOTAL		152.43	149.57	

MARINE GAS OIL TANKS				
TANK NAME	ITEMS	LOCATION	VOLUME (M ³)	CENTER OF GRAVITY (M)
M.G.O. STOR. T.	31 ^{MM} 41 S	131.12	128.50	-58.444
M.G.O. SERV. T.	31 - 25 ^{MM} S	21.32	20.89	-62.500
M.G.O. SERV. T. FOR HPP	36 - 40 P	10.54	10.33	-57.800
TOTAL		162.98	159.72	

LUBRICATING OIL TANKS				
TANK NAME	ITEMS	LOCATION	VOLUME (M ³)	CENTER OF GRAVITY (M)
W/E L.O. STOR. T.	21 - 34 C	27.33	26.78	-66.539
W/E L.O. STOR. T.	25 - 29 S	25.46	24.95	-66.700
W/E L.O. STOR. T.	25 - 29 S	25.46	24.95	-66.700
W/E L.O. STOR. T.	26 - 29 S	12.70	12.45	-66.300
W/E L.O. STOR. T.	26 - 29 S	12.70	12.45	-66.300
W/E L.O. STOR. T.	28 - 30 P	21.07	20.35	-65.100
W/E L.O. STOR. T.	28 - 30 P	21.07	20.35	-65.100
W/E L.O. STOR. T.	28 - 30 P	21.07	20.35	-65.100
TOTAL		147.69	144.75	

FRESH WATER TANKS				
TANK NAME	ITEMS	LOCATION	VOLUME (M ³)	CENTER OF GRAVITY (M)
F.W. T.	1 - 12 P	174.56	-82.064	-10.586
DIST. W. T.	-1 - 6 S	85.43	-85.007	-10.093
FEED. W. T.	6 - 12 S	108.28	-80.611	-10.838
TANK CLEAN. T.	AE - 11 C	331.01	-84.835	-10.180
TOTAL		699.28		

OTHER TANKS				
TANK NAME	ITEMS	LOCATION	VOLUME (M ³)	CENTER OF GRAVITY (M)
S/T C.W. T.	6 ^{MM} 13 C	25.72	-79.367	-0.031
B.L. H. T.	13 - 20 C	32.83	-74.559	-0.048
B.O. C. T.	30 - 35 P	20.90	-62.158	-3.321
M.D.O./G.O. OVER. T.	27 - 30 S	8.55	-65.435	2.934
F.O. DR. T.	28 - 30 P	6.01	-65.072	2.975
F.O. OVER. T.	38 - 41 P	11.52	-56.731	-2.260
H.S.O. T. FOR HPP	37 - 40 S	22.35	-57.500	2.795
H.S.O. T. FOR HPP	37 - 40 P	16.95	-57.500	-2.120
L.O. DR. T.	26 - 28 P	4.79	-66.667	-2.788
SEWAGE H. T.	15 - 19 P	41.58	-74.626	-9.942
SLUDGE H. T.	30 - 38 P	13.97	-61.100	-9.302
S/T L.O. S. T.	16 - 17 S	1.57	-75.095	1.002

- REMARK
- L.C.G. : () SIGN MEANS FORE FROM MIDSHIP
() SIGN MEANS AFT FROM MIDSHIP.
 - V.C.G. : VERTICAL CENTER OF GRAVITY ABOVE BASE LINE
 - T.C.G. : () SIGN MEANS STARBORD FROM CENTER LINE.
() SIGN MEANS PORT FROM CENTER LINE.

PRINCIPAL PARTICULARS

LENGTH (O.A)	183.10	M
LENGTH (B.P)	174.00	M
BREADTH (M.D)	32.20	M
DEPTH (M.D)	19.10	M
DRAFT (M.D) (DESIGN)	11.00	M
DRAFT (M.D) (SCANT.)	13.30	M
FREEDBOARD : "A" TYPE (ASSIGNED TYPE "B")		
FLAG : LIBERIA		
MAIN ENGINE		
TYPE : B&W 6550ME-B9.2		
MCR : 7,570 KW at 91.9 RPM		
NCR : 6,056 KW at 91.9 RPM		
CLASSIFICATION : LR (SB570 and 571)		
* 100AT, Double Hull Oil and Chemical Tanker, Ship Type2 and 3,		
CSR, ESP, ShipRight(CM, ACS(B)), LL, *IWS, SPM4, ETA,		
* LMC, LMS, ICS, ECO(ED), IHM, VEC-S, P, DIS1)		
DESCRIPTIVE NOTES : COWI/LR, ETA, Port Higher Tensile Steel, ShipRight (BWP(S), SERS, SOW)		

IMO NO. : 9669914		Ship No. : SB570	
Approved By : J. H. KIM	DWT : 51,200 CLASS : GREEN PLANET	M/V : ARBAN	Scale : 1/200
Approved By : H. S. KIM	PRODUCT / CHEMICAL TANKER	Owner : ARBAN	Drawing No. : 281010081
Approved By : J. W. LEE	CAPACITY PLAN	Date : MAR. 08.2014	Class : LR
Drawing By : J. W. LEE	(+82-51-419-5141)	Drawing No. : 281010081	Class : LR