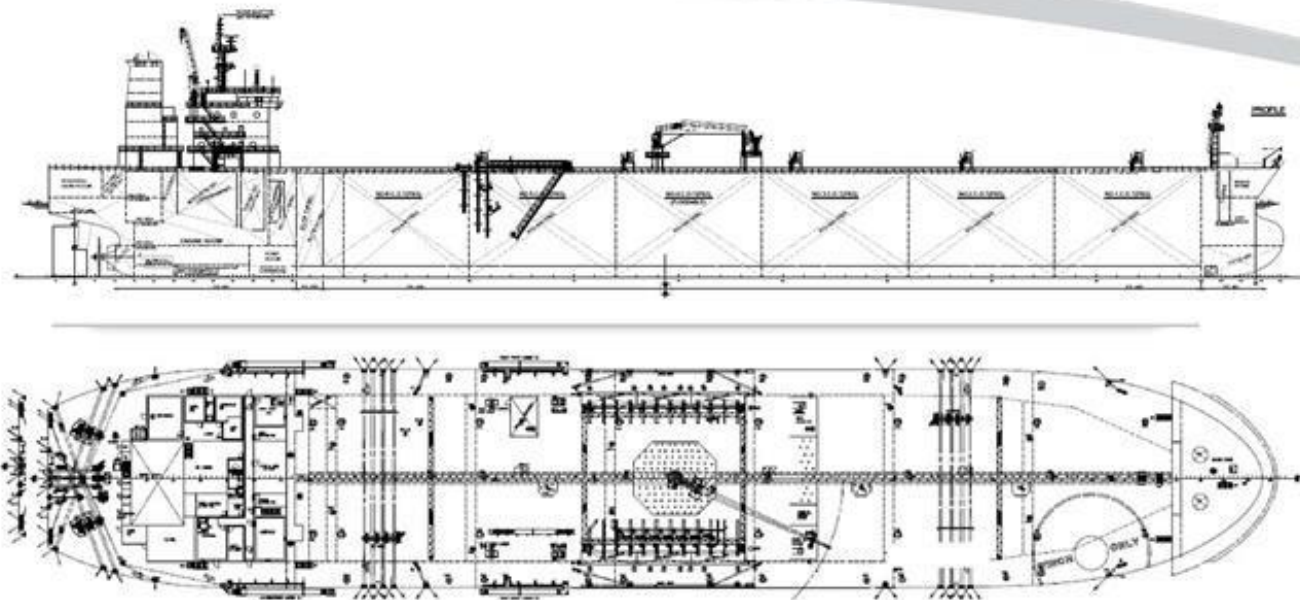


N 753

N 754



DWT 113,000 – Crude Oil Tanker - Built By: COSCO ZHOUSAN SHIPYARD Co, Ltd

HULL NUMBER	CLASS	CLASS Notations
N 753	LR	+100A1, Double Hull Oil Tanker, CSR, ESP, ShipRight(CM, ACS(B,C)), LI, *IWS, DSPM4, ECO(BWT, IHM, EAL, P, SEEMP), with descriptive notes COW(LR), ETA, "ShipRight(BWMP(T), SCM, SERS, VECS)", +LMC, UMS, IGS, NAV1
N 754	LR	+100A1, Double Hull Oil Tanker, CSR, ESP, ShipRight(CM, ACS(B,C)), LI, *IWS, DSPM4, ECO(BWT, IHM, EAL, P, SEEMP), with descriptive notes COW(LR), ETA, "ShipRight(BWMP(T), SCM, SERS, VECS)", +LMC, UMS, IGS, NAV1



## PRINCIPAL PARTICULARS

Flag:	Liberia
L.O.A.:	250.00 m
Br.:	44.00 m
Summer draft (EXT):	15.00 m
Draft (Winter):	14.688 m
Light weight	20,60 T
F.W.A.:	338.00 mm
Center of manifold to bow:	124.43 m
Parallel middle body (at Summer draft):	135.59 m
Panama chock size:	600 x 450 mm x 2
Height of double bottom W.B. tanks:	2.4 m
International Tonnage(Gross):	Abt 63,930
Suez Canal Tonnage(Gross):	-
Panama Canal Tonnage(Net):	-
Main Engine:	MAN B&W 6G60ME-C9.5 Tier II
Diesel Generator:	3 units 900KW at 720 RPM, AC 450V, 60Hz
Propeller:	F.P.P. Aerofoil 4 blades solid type, Material Ni – Al - Bronze
Speed:	14.30 knots at design draft, 14.00 knots at scantling draft
Foc for Main Engine (Service Speed):	Abt. 36.2 T/day, Endurance: Abt. 20,000 N.M.
Port of Registry:	MONROVIA
L.B.P.:	239.0 m
Dpt.:	21.3 m
Dead weight (Summer):	112,590T
Dead weight (Winter):	109,914T
T.P.C.:	99.1 T/cm
Radar mast above keel:	About 53,50 m
Draft at which propeller is submerged:	8.25 M
Parallel middle body (at Ballast draft):	107.99 M
Breadth of side W.B.tanks:	2.4 m
International Tonnage(Net):	34,920
Suez Canal Tonnage(Net):	-
MCR:	12,600 KW x82.0 RPM
NCR:	9,450 KW x74.5 RPM

## CARGO OIL TANKS

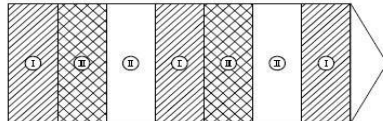
TANK NAME	FRAMES	CAPACITY		LCG (M)	V.C.G. (M)
		100%	98%		
No.1 C.O.T. (P)	93-100	8547.2	8376.3	91.978	12.469
No.1 C.O.T. (S)	93-100	8547.2	8376.3	91.978	12.469
No.2 C.O.T. (P)	86-93	11003.8	10783.7	63.911	12.320
No.2 C.O.T. (S)	86-93	11003.8	10783.7	63.911	12.320
No.3 C.O.T. (P)	79-86	11030.9	10810.3	34.334	12.318
No.3 C.O.T. (S)	79-86	11030.9	10810.3	34.334	12.318
No.4 C.O.T. (P)	72-79	11030.9	10810.3	4.724	12.318
No.4 C.O.T. (S)	72-79	11030.9	10810.3	4.724	12.318
No.5 C.O.T. (P)	65-72	11030.9	10810.3	-24.886	12.318
No.5 C.O.T. (S)	65-72	11030.9	10810.3	-24.886	12.318
No.6 C.O.T. (P)	58-65	10548.0	10337.0	-54.112	12.613
No.6 C.O.T. (S)	58-65	10548.0	10337.0	-54.112	12.613
SLOP TANK (P)	56-58	1664.2	1631.0	-71.969	13.468
SLOP TANK (S)	56-58	1664.2	1631.0	-71.969	13.468
TOTAL		129712.0	127117.7		

## INTERNATIONAL LOAD LINE

Freeboards from 0.0mm below Upper Deck at Side			
SEASONS	FREE BOARD (M)	DRAFT (Ext.M)	DEADWEIGHT (MT)
Summer S.W.S.	6317	15,000	113,000
Tropical S.W.T.	6004	15,313	116,104
Winter S.W.W.	6629	14,688	109,914
Summer F.W.F.	5979	15,338	116,353
Tropical F.W.TF	5666	15,651	119,465

## CARGO SEGREGATION

### TANK LAYOUT

CARGO SEGREGATION		
TANK LAYOUT	GROUP	VOLUME RATE-M3
	I	Abt. 31,8% - 42484,7
	II	Abt. 34,2% - 44069,5
	III	Abt. 34,0% - 43157,8